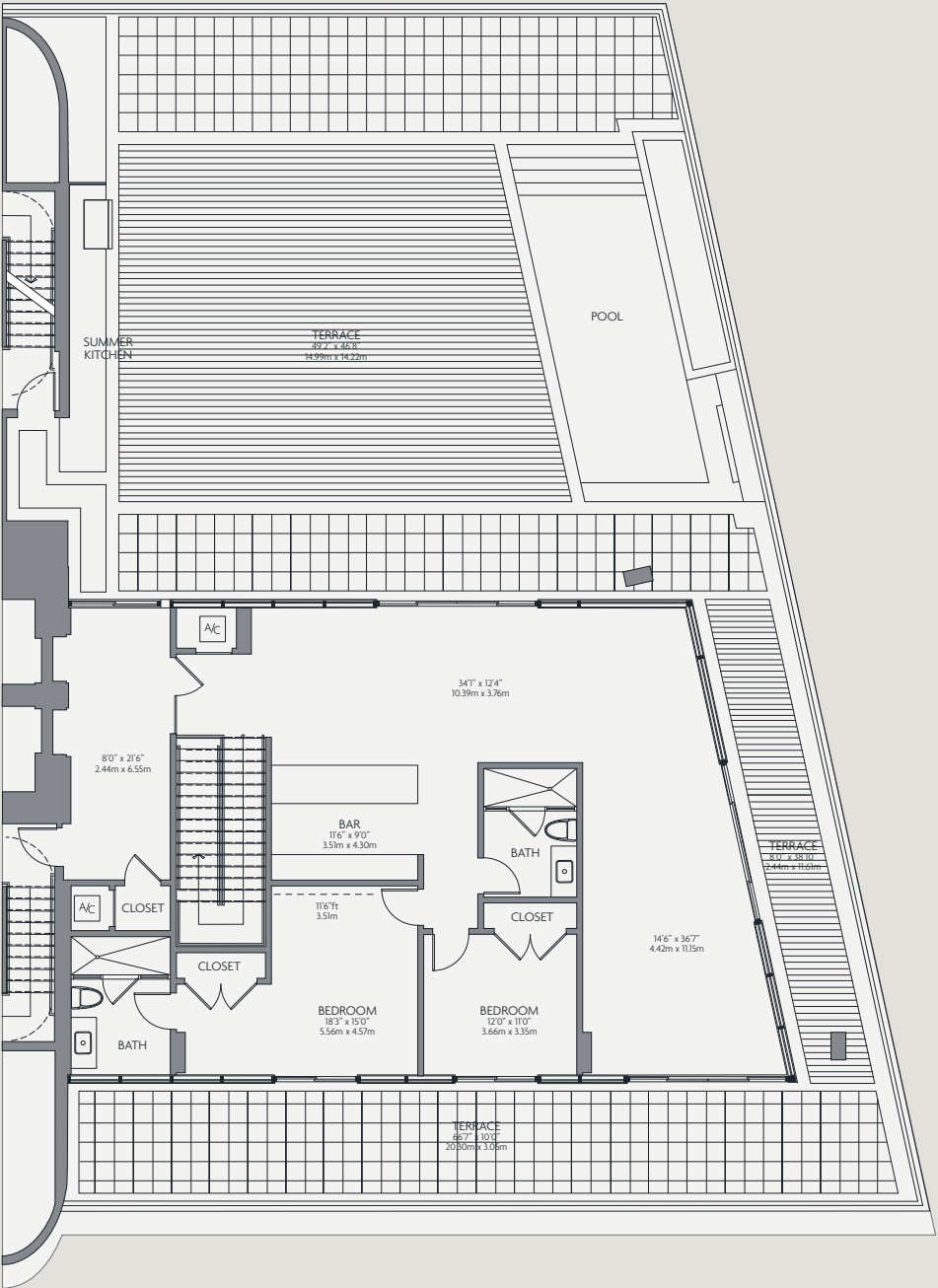
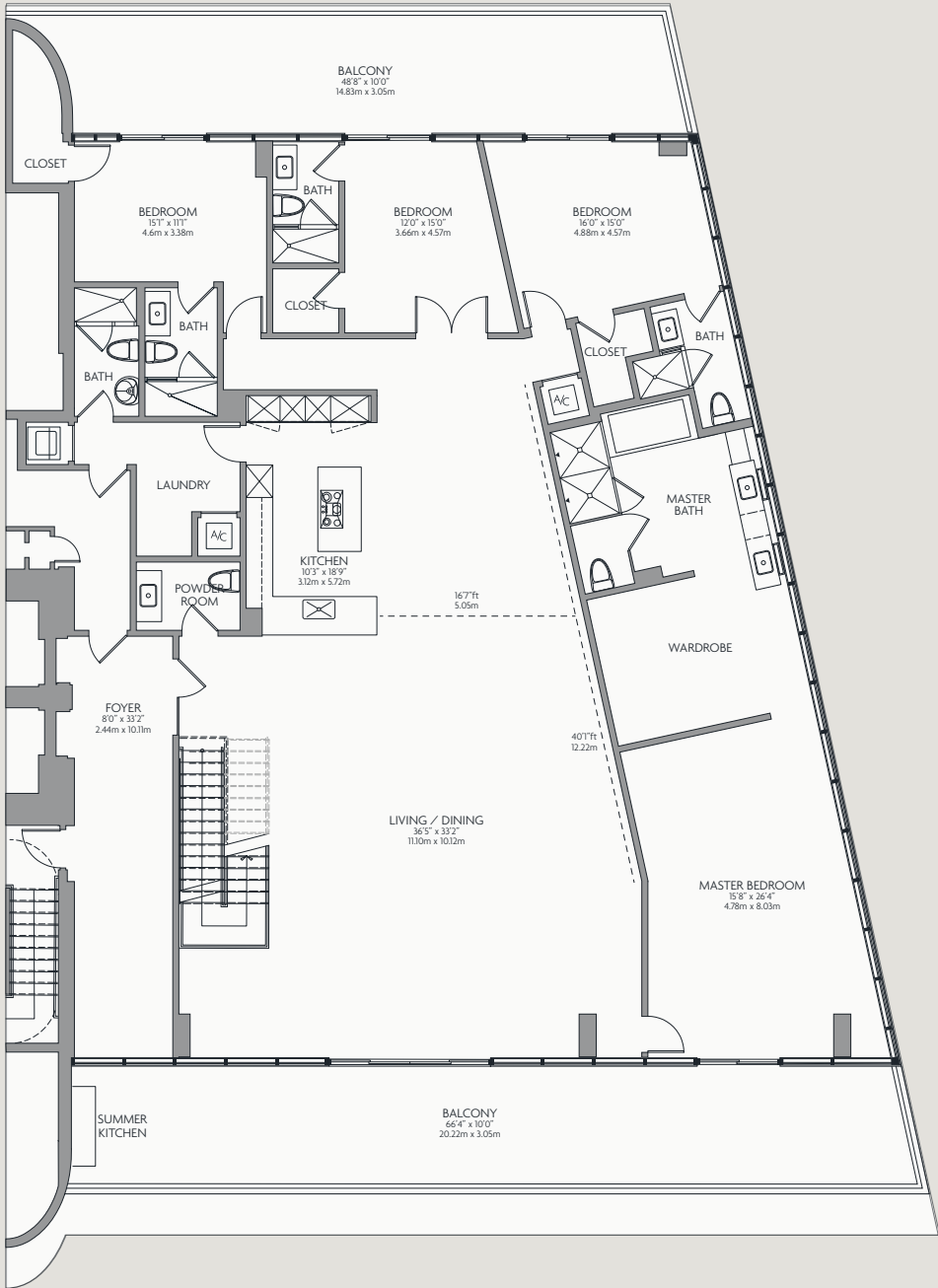


BAY VIEW



INTRACOASTAL & OCEAN VIEW

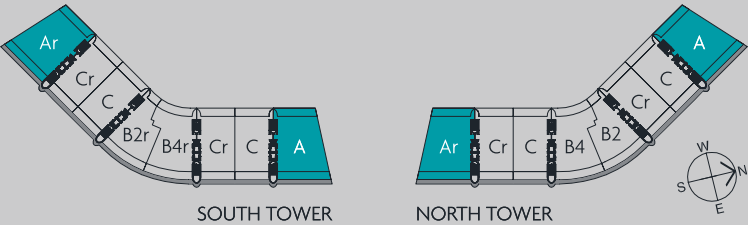
PH-A

6 BEDROOMS / 7.5 BATHROOMS

INTERIOR	6,200 SF	576.00 M <sup>2</sup>
TERRACE	4,622 SF	429.38 M <sup>2</sup>
TOTAL	10,822 SF	1,005.38 M <sup>2</sup>

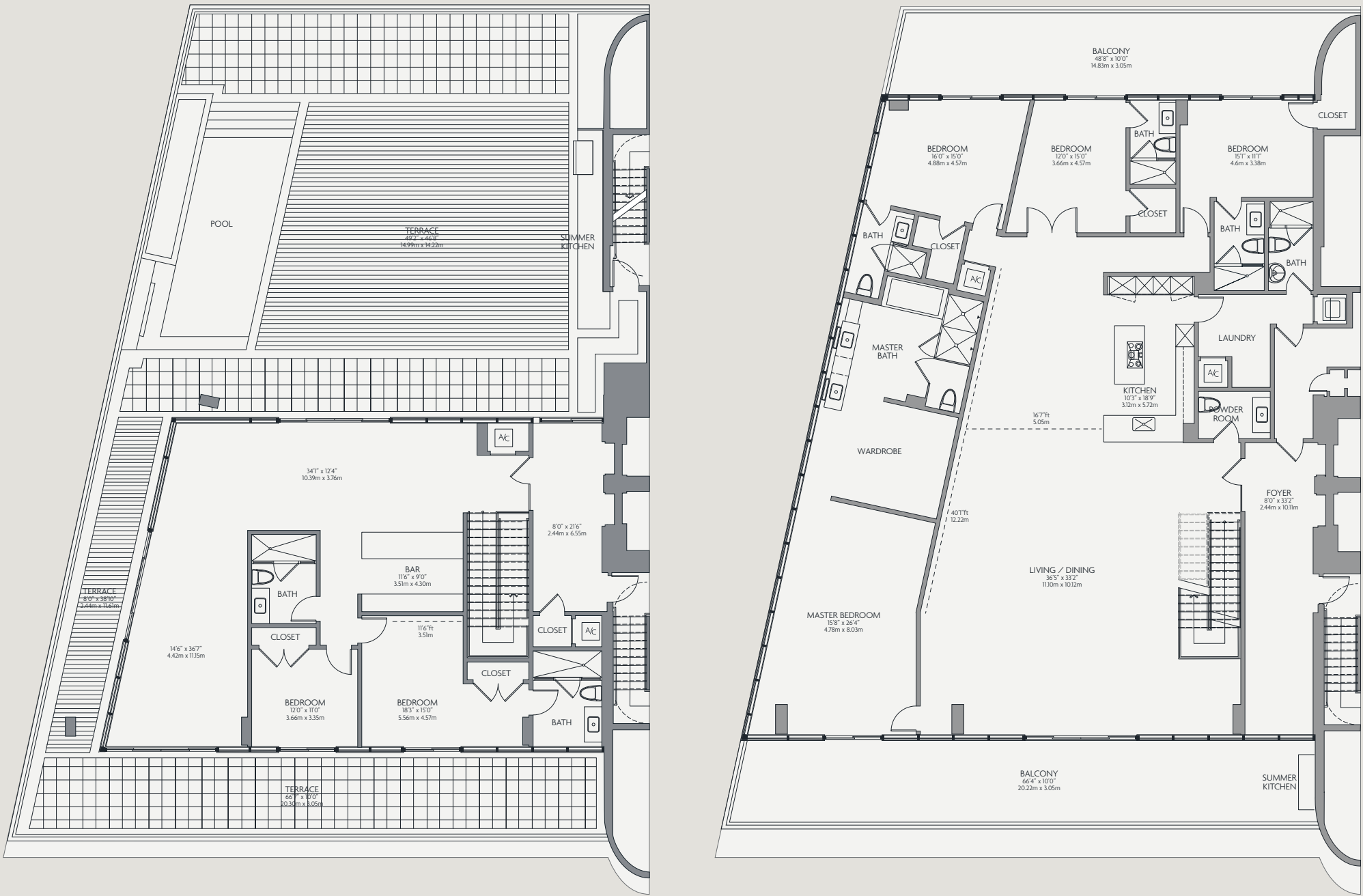
Privé offers 160 graciously appointed residences in two dramatically angled, 16-story buildings. Featuring flow-through layouts with soaring, ten-foot ceilings, each Privé residence offers dramatic views of both the Atlantic Ocean and the Intracoastal Waterway through expansive floor-to-ceiling windows.

Private elevator foyers lead to spacious, well-proportioned spaces ranging from 2,585 to over 9,000 square feet. Exceptional fixtures and finishes include European kitchens and baths, plus elaborate summer kitchens for outdoor entertaining on deep, private terraces.



Stated square footages and dimensions are measured to the exterior boundaries of the exterior walls and the centerline of interior demising walls and in fact vary from the dimensions that would be determined by using the description and definition of the "Unit" set forth in the Declaration (which generally only includes the interior airspace between the perimeter walls and excludes all interior structural components and other common elements). This method is generally used in sales materials and is provided to allow a prospective buyer to compare the Units with units in other condominium projects that utilize the same method. For your reference, the area of the Unit, determined in accordance with these defined unit boundaries, is set forth above and is labeled as "AC" (Terraces, although included in the total square footage, are not part of the Unit). Measurements of rooms set forth on this floor plan are generally taken at the farthest points of each given room (as if the room were a perfect rectangle), without regard for any cutouts or variations. Accordingly, the area of the actual room will typically be smaller than the product obtained by multiplying the stated length and width. All dimensions are estimates which will vary with actual construction, and all floor plans, specifications and other development plans are proposed and conceptual only, which are subject to change and will not necessarily accurately reflect the final plans and specifications for the development.

BAY VIEW



INTRACOASTAL & OCEAN VIEW

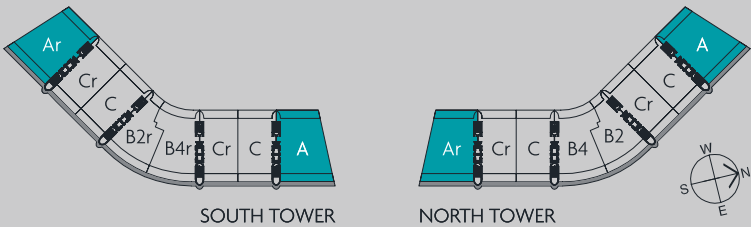
PH-Ar

6 BEDROOMS / 7.5 BATHROOMS

INTERIOR	6,200 SF	576.00 M <sup>2</sup>
TERRACE	4,622 SF	429.38 M <sup>2</sup>
TOTAL	10,822 SF	1,005.38 M <sup>2</sup>

Privé offers 160 graciously appointed residences in two dramatically angled, 16-story buildings. Featuring flow-through layouts with soaring, ten-foot ceilings, each Privé residence offers dramatic views of both the Atlantic Ocean and the Intracoastal Waterway through expansive floor-to-ceiling windows.

Private elevator foyers lead to spacious, well-proportioned spaces ranging from 2,585 to over 9,000 square feet. Exceptional fixtures and finishes include European kitchens and baths, plus elaborate summer kitchens for outdoor entertaining on deep, private terraces.



Stated square footages and dimensions are measured to the exterior boundaries of the exterior walls and the centerline of interior demising walls and in fact vary from the dimensions that would be determined by using the description and definition of the "Unit" set forth in the Declaration (which generally only includes the interior airspace between the perimeter walls and excludes all interior structural components and other common elements). This method is generally used in sales materials and is provided to allow a prospective buyer to compare the Units with units in other condominium projects that utilize the same method. For your reference, the area of the Unit, determined in accordance with these defined unit boundaries, is set forth above and is labeled as "AC" (Terraces, although included in the total square footage, are not part of the Unit). Measurements of rooms set forth on this floor plan are generally taken at the farthest points of each given room (as if the room were a perfect rectangle), without regard for any cutouts or variations. Accordingly, the area of the actual room will typically be smaller than the product obtained by multiplying the stated length and width. All dimensions are estimates which will vary with actual construction, and all floor plans, specifications and other development plans are proposed and conceptual only, which are subject to change and will not necessarily accurately reflect the final plans and specifications for the development.